



2025 Lebanon Centers Campus Public Safety Report

A guide in compliance with the Jeanne Clery Act, Federal Crime Awareness & Campus Public Safety Act

"Safety Is Everyone's Business"

Lebanon Center Administrative Office • 44 industrial Way • Lebanon, OR 97335

Daytime: 541-936-0631 (Health Occupations Public Safety Officer), 541-936-0631 (Health Occupations Public Safety Office),
or 541-918-8906 (Health Occupations Reception)

Evenings, Weekends, or Emergency: 541-926-6855 email: security@linnbenton.edu:

Web: <https://www.linnbenton.edu/about/safety/index.php>

Linn-Benton
COMMUNITY COLLEGE

Table of Contents

CAMPUS PUBLIC SAFETY OFFICE AUTHORITY	3
PUBLIC SAFETY OFFICE RESPONSIBILITIES	3
Crime Prevention Strategies.....	3
Crime Reports	3
Requesting Report Copies	4
Services Provided	4
ALCOHOL AND DRUG FREE PROGRAMS.....	5
SEXUAL HARSASMENT/ASSAULT/PERSONAL VIOLENCE POLICY	5
Confidentiality of Reporting	6
REGISTERED SEX OFFENDERS	6
TIMELY WARNINGS AND EMERGENCY NOTIFICATION AND RESPONSE.....	7
Emergency Preparedness and Response.....	7
HOURS OF OPERATION	7
Hours of Operation and Contact Persons by Campus.....	9-10
CRIME STATISTICS (CURRENT AND PREVIOUS TWO YEARS)	11-13
CLERY GEOGRAPHY MAP.....	14

Campus Safety is a Team Effort

Campus safety at Linn-Benton Community College is a team effort among the administration, faculty, staff and students. Campus Public Safety is committed to providing a safe and enjoyable environment in which all members of the campus community may pursue their academic and social activities. Safety is a very important part of the educational experience.

As part of our safety team, Campus Public Safety encourages everyone to report all crimes and suspicious activity. We need your help! Your observations and assistance makes the difference. Information from you helps us maintain and improve campus safety. Board Policy 5100 and Administrative Rule 5100-01 found at <https://www.linnbenton.edu/search/?q=5100> under Administrative Information/ Policies/"Administrative Rules and Board Policies" further explains reporting responsibilities and avenues.

Campus Public Safety Office

The Linn-Benton Community College Board of Education has authorized the Director of Safety and Loss Prevention and Campus Public Safety Officers to ensure compliance with federal, state, and local laws and Linn-Benton Community College Board Policies and Administrative Rules. Campus Public Safety personnel will utilize every opportunity to persuade violators to comply with laws and/or administrative rules. Public Safety personnel will use discretion with violators and, when necessary, enact a citizen's arrest. Though LBCC has no formal written Memorandum of Understanding with local law enforcement agencies in the cities where LB property resides, these premises are under the jurisdiction of the respective city's law enforcement agency. If a citizen's arrest is enacted, the respective Albany, Corvallis, Lebanon, or Sweet Home Police Department is notified to file criminal charges or make a formal arrest.

LBCC Public Safety staff is trained and certified through the OR Department of Public Safety Standards and Training. Public Safety Officers have authority and responsibility on LBCC properties as established in Board Policy 5095, the associated ARs, and as granted by the State of OR Legislature under ORS 341.300 and 341.290.

Campus Public Safety's Responsibilities

Our primary responsibility is protecting the safety and physical security of the campus community—its people, vehicles, buildings, and property—as well as providing general assistance to visitors and employees.

Crime prevention

We believe that the key to campus safety begins with each member of the campus community educating themselves, taking precautions, and being aware of preventive measures. Most incidents on campus can be avoided by taking basic precautions, such as walking in pairs at night, locking all offices and car doors, and not leaving personal valuables unattended. Campus Public Safety is always available to meet with individuals and groups to discuss safety, crime prevention methods, and related issues. Further information is available at the Public Safety website - <https://www.linnbenton.edu/faculty-and-staff/college-services/public-safety-emergency-planning-ehs/index.php> (click the "Don't Be A Victim" link in the left navigation bar). Please report all crimes to Campus Public Safety, Willamette Hall, Room WH-110. Public Safety Officers are available 24 hours a day by calling 541-926-6855. Reports may be submitted by calling this number directly, calling extension 4440 from a campus network phone, sending an e-mail to security@linnbenton.edu, submitting a report at the online reporting link <https://www.linnbenton.edu/about/safety/index.php> - and/or reporting crimes to your local police department in a timely manner.

Campus crime reports

The Annual Campus Security Report is prepared by the Director of Safety and Loss Prevention and a Public Safety Officer in charge of collecting and assessing statistics from crimes and incidents reported. The statistics for this report are derived from incidents reported to the Campus Public Safety Office, Office of the Manager, Student Conduct and Retention , designated

Campus Security Authorities, the online reporting link -<https://www.linnbenton.edu/about/safety/index.php>, and in cooperation with local law enforcement agencies which provide statistics for incidents reported to them at both campus and college-owned or controlled non-campus properties. These statistics also include anonymous or confidential reports submitted. Criminal activity on campus is reported to the campus community through the following:

- Annual Reports are available online at <https://www.linnbenton.edu/about/safety/index.php>, or in print at the Public Safety Office, WH 110.
- Special Crime Alerts pertaining to Part I crimes as listed in the Annual Campus Public Safety Report may be prepared and distributed campus-wide through campus e-mail, LBCC ReGroup messaging system, the Public Safety Web Page at (see the “Safety Alerts” link under “Annual Safety Report” in the left navigation bar) and The Commuter (the weekly student newspaper) within one week of occurrence.. <https://www.linnbenton.edu/about/safety/index.php> A Daily Crime Log is maintained by the Public Safety Office, WH 110, and is available for public review.

Requesting copies of this report

Printed copies of the Annual Campus Security Report are available in the Campus Public Safety Office (WH-110), in the office of the Manager, Student Conduct and Retention (Takena Hall, T-107), and on the LBCC website at (click on the “Annual Safety Report” link in the left navigation bar on the page). <https://www.linnbenton.edu/about/safety/index.php> Copies can be mailed upon request by calling the Campus Public Safety Office at (541) 917-4440.

Services

The Campus Public Safety department is always open and ready to respond to any campus emergency or request for assistance. Our professionally trained staff of seven full-time and four half-time Public Safety officers receives specialized training each year in First Aid and CPR, emergency response procedures, hazardous materials (HAZMAT) procedures, verbal de-escalation, and other safety and security-related protocols.

Public Safety officers patrol all areas of the Albany main campus and parking lots 24 hours a day. All exterior doors on campus are unlocked by 7 a.m. and locked by 11 p.m. Monday – Friday except college closure days. Only scheduled buildings and rooms are open on weekends, holidays, and times of closure. Arrangements for access can be made with the Campus Public Safety department staff on a case by case basis by calling (541) 926-6855. Public Safety Service is also provided at the Benton Center and Lebanon Centers.

Public Safety officers enforce local/federal/state laws, parking and traffic regulations, college policies, and report crimes in progress or criminal activity to the police. Public Safety officers also respond to building alarms, injuries or illness, traffic and parking accidents, reports of suspicious activities, and safety hazards. Campus Public Safety maintains a working relationship with Albany, Corvallis, Lebanon, and Sweet Home Police and Fire Departments.

The Campus Public Safety Department provides information at WH 110, on the LBCC website, at the LBCC Public Safety cell phone app, on digital reader boards around campus, and during special events that inform students and staff of tips on crime prevention, personal safety, security awareness, emergency preparedness and response protocols, and Public Safety resources. A Public Safety information table is provided in a common public area during Welcome Day (usually a day in the third week of September, 10 a.m. – 1 p.m.), the Spring Health & Safety Fair (usually a day in the first week of May, 11 a.m. – 1 p.m.), at College Night (usually in February), and during Career Day (in spring term) on campus. Public Safety personnel are present to answer questions regarding security and safety-related topics and to provide general information.

Other services include:

- Safety, emergency preparedness and response, and risk management awareness handouts at student orientation.
- An Evening Escort Service in which Public Safety officers accompany students and staff to their vehicles.
- Safety planning for individuals with personal safety concerns

- Crime prevention, safety, and emergency response presentations to various groups or organizations as requested.
- Electronic Alarm and Video Surveillance Systems maintained throughout the facilities to detect fire and break-ins at various locations.
- Public Safety and Facilities surveys of exterior lighting, exterior doors, and grounds are conducted periodically.
- Quarterly routine campus safety inspections and corrective recommendations made in conjunction with the Safety Committee.

Alcohol and Drug-free Programs

In accordance with “The Drug-Free Schools and Communities Act Amendment of 1989 (Public Law 101-226),” the LBCC pamphlet “Aim High or Aim Low” is available free upon request from the Human Resources Office or in WH-110. The pamphlet outlines health risks, local counseling, and treatment resources; standards of conduct; and applicable laws relating to drug and alcohol use. Anyone wishing additional information should contact the office of the Manager, Student Conduct and Retention at (541) 917-4806 or go to LBCC’s Drug Free web page at <https://www.linnbenton.edu/about/policies/drug-free.php>

Linn-Benton Community College does not allow the use, distribution, or possession of State or Federally illegal narcotics and drugs. Alcohol is permitted only as detailed in LBCC Board Policy 5060 and Administrative Rule 5045-01 (found at <https://www.linnbenton.edu/about/policies/drug-free.php>). Violators of this policy may be subject to student disciplinary action and/or criminal charges filed through the local law enforcement agency.

Sexual Harassment/Assault/ Personal Violence Policy

Linn-Benton Community College takes a proactive stance against sexual harassment, sexual assault, and personal violence per LBCC Board policies regarding Nondiscrimination and Non-harassment (Policy No. 1015) and Non-discrimination, Non-harassment Statements and Procedures (Administrative Rule 1015-01), and student protection under Title IX of the 1972 Education Amendment. Further information about reporting protocols, disciplinary procedures, and resources is available on the LBCC Web site at <https://www.linnbenton.edu/about/policies/titleix.php> under Policies/“ Board Policies and Administrative Rules” (Click on Administrative Rule 1015-01) and at the “Student Right To Know” link found at the very bottom of every LBCC webpage. <https://www.linnbenton.edu/about/bp-ar/index.php>

Inappropriate student behavior, what it is and how to respond, is addressed in the “Students Rights, Responsibilities and Conduct” policy available at the LBCC web pages under Administrative rule 7030-01 at <https://www.linnbenton.edu/about/bp-ar/7030-01.php>, in the “Personal Empowerment Through Self Awareness” training required of all new students and staff (education link found at <https://www.linnbenton.edu/about/bp-ar/1015-01.php> and Administrative Rule 1015-01.

Ongoing resources for and information about prevention and awareness can be found at the “Preventing Sexual Assault, Dating Violence, Domestic Violence, & Stalking” web page at <https://www.linnbenton.edu/about/policies/titleix.php>

A Title IX brochure (including recommendations for action and local resources for counseling, victim advocacy, mental health, legal aid) and further information for victims and those accused of sexual assault are linked from this page as well.

A student who commits any form of sexual assault faces criminal charges, disciplinary due process conducted by the Manager, Student Conduct and Retention, as well as administrative sanctions to include from a day up to a year suspension or permanent expulsion from school. Campus disciplinary procedures in all alleged sexual assaults include the following:

- Accuser and accused are entitled to have an advisor of choice present during a campus disciplinary proceeding and any related meetings.

- Accuser and accused shall be informed simultaneously in writing of the outcome of any campus disciplinary proceeding brought about by an alleged sexual offense. In the case of death of a victim, next of kin will be notified.
- Investigations on sexual assault charges will be prompt, fair, and impartial and be conducted by a Title IX investigator trained in investigative procedures that protect and promote the safety of victims.
- Conduct proceedings will be conducted by personnel who receive annual training on the issues of dating violence, domestic violence, sexual assault, and stalking
- A “more likely than not” standard of evidence will be used in making a determination.
- STEP IV: APPEAL TO THE APPROPRIATE SENIOR EXECUTIVE
- A party may appeal an adverse decision to the appropriate college senior executive (i.e., the vice-president with responsibility for the work unit in which the complaint resides or a trained Title IX Coordinator for Title IX matters) or designee by providing a written letter of appeal within fifteen (15) calendar days of receipt of the summary report or notice of outcome. Grounds for appeal are as follows: procedural irregularity, conflict of interest, or bias, and newly discovered information. [For Title IX, see <https://www.linnbenton.edu/about/policies/titleix.php>: Appeal, for more information.]
- The assigned appeals officer will review the appeal and any information they deem necessary to determine if the investigation was in compliance with college procedure and impartially conducted. If newly discovered information is the grounds for appeal, the appeals officer will review that information for relevance; if relevant, the officer may return the complaint to the hearings officer for reconsideration, which may return the matter to Step II and then continue forward through these processes. In all other instances, within thirty (30) calendar days of receiving a written appeal, the appeals officer will respond to the original parties and provide a copy to the Coordinator and any other appropriate individuals.
- STEP V: HECC/CCWD APPEAL
In any case where the complainant asserts they have been discriminated against by an LBCC employee, the complainant may appeal the college's final decision by writing to the Higher Education Coordinating Commission Office of Community Colleges and Workforce Development (CCWD) -- pursuant to the Oregon Department of Education Administrative Rule OAR 589-010-0100.
- The college will follow all other protocols as required by federal law. Where federal law requires face-to-face hearings, student advocates to question the other party in student situations, or makes other changes to Title IX processes, the college will adopt those new models and methods.

The accuser has the right to request protective measures and interventions by the Public Safety Office (i.e. enforcement of a restraining order, creation of a safety plan, personal escorts to and from classes) to make the campus safer. He/she also may request victim advocacy, access brief on-campus counseling by an LBCC counselor, receive referrals to community resources, and receive options for changes to her/his academic, transportation, and working situation.

If you are a victim of a sexual assault at this institution, your first priority should be to get to a place of safety. You should then obtain necessary medical treatment. The LBCC Public Safety Office strongly advocates that a victim of sexual assault report the incident in a timely manner. Time is a critical factor for evidence collection and preservation. An assault should be reported directly to the police, a hospital, LBCC’s sexual assault advocate, LBCC Public Safety, LBCC’s Title IX Officer or Manager, Student Conduct and Retention as described in Administrative Rule 1015-01, or one of the college representatives noted in the table on pages 8-9. Filing a report also with local law enforcement is encouraged to provide the opportunity for collection of evidence to be used in prosecution should the victim elect to pursue charges. The Public Safety Office will assist in notifying the authorities if the victim so chooses.

Confidentiality of reporting

LBCC will not acquire or use any confidential record or communications which you provide to the certified advocate in any investigation, unless you choose to provide us that information. Counselors and Campus Security Authorities (CSAs) will keep information confidential so long as the incident does not pose a Public Safety danger; they may need to report to LBCC Public Safety the location of on-campus incidents and the crime statistic for the purpose of Clery Act reporting. If you do not want a discipline or conduct investigation, you may keep the perpetrator's name to yourself. LBCC does not otherwise create confidential medical or other records. Academic records in the possession of the college and/or behavior known to college employees for purposes of knowing you and providing you supports, may be reviewed to assess how to best serve you and assess your situation.

Registered Sex Offenders

The Campus Sex Crimes Prevention Act of 2000 is a federal law that provides for the tracking of convicted sex offenders enrolled at, or employed at, institutions of higher education. The law requires state law enforcement agencies to provide LBCC with a list of registered offenders who have indicated they are enrolled, employed, or carrying on a vocation at LBCC. A list of registered predatory sex offenders who are current students or are employed by LBCC is available in the Campus Public Safety Office (RHC-119). The list incorporates information provided by the Sheriff's Office in Linn and Benton counties as of the second week of the quarter. Since students may register throughout the quarter, or reside in other counties, students are encouraged to check the Sheriff's Web sites for a list of offenders who are on probation in other counties. Further, a more complete list of predatory offenders who are on and off probation may be obtained through the Oregon State Police. The phone numbers are: Linn County Sheriff's Office (541) 967-2005, Benton County Sheriff's Office (541) 766-6887, and Oregon State Police (503) 934-1258. Links to some online resources can be found at the Student Right to know web page, <https://www.linnbenton.edu/about/policies/srtk.php>

Timely Warnings and Emergency Notification and Response

In accordance with LBCC Board policy 1030 and Administrative Rule 1030-01, timely warnings regarding a report of a crime on LBCC property will be confirmed by the Director of Safety and Loss Prevention and a warning issued, after consultation with LBCC's administration, by the Public Information Officer and/or the Safety and Loss Prevention Director to the entire college community. The notice will be communicated as broadly as possible for the circumstances using college email, ReGroup emergency messaging system, the college webpage, and/or the public address system. Further information about the policy can be obtained on the LBCC web site at: <https://www.linnbenton.edu/about/bp-ar/1030-01.php> under Policies/" Board Policies and Administrative Rules".

On-going safety alerts are posted at the LBCC Public Safety website: Public Safety Web Page at: <https://www.linnbenton.edu/about/safety/index.php> (see the "Safety Alerts" link under "Annual Safety Report" in the left navigation bar)

Emergency notifications are done in accordance with LBCC Board policy 5100 and Administrative Rule 5100-01. Reports by individuals or local emergency services personnel of an emergency event, situation, or condition posing an imminent threat to health, lives, or safety of persons will be confirmed by the Director of Safety and Loss Prevention and a warning will be initiated by the Incident Commander or College President and issued, without delay and in consideration of the safety of the community, by the Public Information Officer and/or the Safety and Loss Prevention Director unless, in the professional judgement of responsible authorities, such notification will compromise efforts to assist a victim or to contain, respond to, or otherwise mitigate the emergency. Emergency messages will be directed to the personnel of impacted area as deemed necessary by the type and proximity of the emergency.

The emergency notification system will use the communication methods best suited to the emergency situation and could include a notification alarm, email, telephone groups, cell phone text and/or voicemail, mobile radios, and/or the LBCC web page news feed. LBCC's Public Information Officer will aid the Incident Commander or College President in determining the content of the message to be communicated.

Emergency Preparedness and Response

LBCC's Emergency Response Plan, in alignment with Board Policies 5100 and 5095 and Administrative Rules 5100-01 and 5095-02, provides general guidance for an all-hazards approach to emergency response. The plan describes College emergency response structure and assigns responsibilities for various response tasks. The Safety and Loss Prevention Department in coordination with the Safety Committee plan quarterly drills to test response plans and capabilities and assess outcomes. All staff are required to annually review emergency response protocols posted at the Public Safety web page - <https://www.linnbenton.edu/about/safety/index.php> , to participate in drills and exercises and review specific protocols related to the simulated drill emergency, and to guide students in response activities. Documentation of each exercise is maintained by the Director of Safety and Loss Prevention. Further information on emergency plans and response can be found at the Public Safety website: <https://www.linnbenton.edu/about/safety/index.php>

Hours of Operation - Security of and Access to Campus Facilities

During hours of operation, LBCC provides free and open campus access to instructors, administrators, students, and visitors. The college takes all reasonable precautions to protect the safety and welfare of all persons visiting. LBCC Board policies on Prevention of Workplace Violence (Policy 1025 and Administrative Rule 1025-01), Use of Facilities Policy (5045 and AR 5045-06), and Safety and Security Policy (5095 and ARs 5095-01, 02, 03, 04, and 05) available at <https://www.linnbenton.edu/about/bp-ar/index.php> under Policies/" Board Policies and Administrative Rules" address the aspects of physical campus security and campus use.

Outside personnel contracted to perform maintenance activities at LBCC campus property must go through a check-in process that includes review of the "Contractor Safety Compliance Plan" – found at <https://www.linnbenton.edu/about/bp-ar/index.php> - and be provided a vendor identification badge. Access to facilities for outside contractors is provided through the Facilities or Public Safety Department, and/or the administrative office at the respective center.

The hours of operation for access to each Linn-Benton Community College campus and the contact person for after hours are listed by location on the following page. Please report all crimes you witness or are victim of to one of the college employees listed. We also encourage anyone that is a victim or witness to a crime to report the incident to the local police. If you do not want to pursue action within LBCC or with the police, we encourage an anonymous or confidential report to the same college employees listed below or to LBCC's reporting link found at <https://www.linnbenton.edu/about/safety/index.php> to help ensure the future safety of yourself or others. Such information helps LBCC keep an accurate record of incidents and determine patterns of crime and/or locations, situations, or persons to which the campus community should be alerted.

What Is Hazing?

<https://www.linnbenton.edu/about/policies/hazing.php>

Definition

According to [Stop Hazing](#), hazing is "any activity expected of someone joining or participating in a group that humiliates, degrades, abuses, or endangers them, regardless of a person's willingness to participate."

So, based on this definition, hazing has three components:

1. It occurs in the context of a group.
2. It involves behavior that is humiliating, degrading, or dangerous.
3. It is not dependent on a participants' willingness to participate or be subject to the activity.

Signs of Hazing

When people think of hazing, they often think of extreme examples, like forced drinking or beating/whipping. While hazing like this does happen, the majority of hazing is less overt and often goes unnoticed – by the group doing the hazing and the individuals being hazed. This type of hazing is often called "subtle" hazing.

While hazing most frequently occurs in student clubs, organizations, and teams, it can occur anywhere and has been documented outside of college contexts. The lack of recognition of hazing means that the problem can become a part of a culture and perpetuate for many years.

Possible signs of hazing include ([How To Identify Hazing](#)):

- Behavioral and communication changes that occur around the same time someone begins participating in an organization
- Changes in behavior like skipping classes, drops in grades, only associating with certain people, or changes to typical routines (eating, sleeping, etc.)
- Talks about hazing behavior as "traditions" or "initiations"
- Chronic fatigue
- Symptoms of depression

Additional signs include ([How to Spot the Warning Signs of Hazing](#)):

- Withdrawal from normal activities
- Unexplained injuries or illness
- Unexplained weight loss
- Physical or psychological exhaustion
- Increase in secrecy and unwillingness to share details
- Wanting to leave [the organization] with no real explanation

How to Report Hazing Concerns

Any person may report concerning behavior by an individual student and/or a student organization to the college by using the [Student Misconduct Report Form](#).

This and other forms may be found at [Get Help or Report a Concern](#). Additionally, reports may be made by contacting the Manager for Student Conduct and Retention at childrj@linnbenton.edu or the Office of Student Conduct and Retention at conduct@linnbenton.edu. For emergency situations where safety is in jeopardy, concerned parties are encouraged to first report to local law enforcement and/or [LBCC Public Safety](#) for immediate assistance.

Reports should include:

1. The name and contact information of the reporting party (while anonymous reports are accepted, they may limit the college's availability to investigate)
2. The name of the person or group accused
3. All known details of the event, and the names of witnesses and others impacted included, if known

<p>Albany Campus</p> <p>Hours of operation: Monday – Thursday.....8:00 am to 5:00 pm Friday.....8:00 am to 5:00 pm (Except for scheduled events later than 5:00 p.m. or on weekends; and Fridays in July-August when LBCC is closed)</p> <p>Saturday, Sunday, holidays, and times of closure, contact Campus Public Safety at (541) 926-6855 for information.</p> <p>Crime reporting: Director, Safety & Loss Prevention(541) 917-4940 Campus Public Safety Secretary 2.....(541) 917-4440 Campus Public Safety Officer.....(541) 926-6855 Manager, Student Conduct and Retention.....(541) 917-4848 Albany Police Department.....(541) 917-7680</p>	<p>LBCC Horse Center (Albany)</p> <p>Hours of operation: Daily.....8 am to 5:00 pm Due to the presence of large live animals, the LBCC Horse Center is only open to students and staff during scheduled class time and horse owners during the posted hours. All others are required to make an appointment by calling the Horse Center at (541) 928-7686 or Campus Public Safety at (541) 917-4440.</p> <p>Crime reporting: Director, Safety & Loss Prevention(541) 917-4940 Animal Science Equine Faculty Dean, Science, Engineering, & Math(541) 917-4416 Or anyone on the Albany Campus list Albany Police Department.....(541) 917-7680</p>
<p>Benton Center (Corvallis)</p> <p>Hours of operation: Monday–Thursday.....8:00 am to 7:00 pm Friday.....8am-4pm(July-Aug -Closed Fri.) Saturday, Sunday, holidays, and times of closure, contact Campus Public Safety at (541) 926-6855 for information.</p> <p>Crime reporting: Director of Benton Center(541) 757-8999, ext. 5104 Director, Safety & Loss Prevention.....(541) 917-4940 Community Education Coord.....(541) 917-4843 Facility Coordinator.....(541) 757-8944, x5114 Center Coordinator.....(541) 757-8944, x5105 Counselor.....(541) 757-8944 Or anyone on the Albany Campus list Corvallis Police Department.....(541) 766-6924</p>	<p>Health Occupations Center</p> <p>Hours of operation: Monday – Friday.....7:00 am to 5:00 pm (Except for scheduled events later than 5:00 p.m. or on weekends; and Fridays in July-August when LBCC is closed)</p> <p>Crime reporting: Dean of Health Occupations..... (541) 917-4263 Director, Safety & Loss Prevention(541) 917-4940 Or anyone on the Albany Campus list</p> <p>Lebanon Police Department.....(541) 451-1751</p>
<p>Advanced Transportation Technology Center</p> <p>Hours of operation: Monday –Friday..... 8:00 am to 5:00 pm (Except scheduled events/classes later than 5:00 p.m. Closed Fridays July and August) Saturday, Sunday, holidays, and times of closure, contact Campus Public Safety at (541) 926-6855 or the Center Building Coordinator at (541) 917-4506 for information.</p>	<p>Victim assistance</p> <p>Linn-Benton Community College is committed to preventing sexual assaults and other crimes. In the event that such a crime occurs, the college will make appropriate referrals through its Counseling Center and Student Life and Leadership Office. The following agencies provide counseling and other services for victims of sexual assault:</p>

Crime reporting:

Dean, Manufacturing and Advanced Transportation
Technology.....(541)917-4754
Director, Safety & Loss Prevention(541) 917-4940
Events and Meeting Coordinator(541) 917-4506
Center Building Coordinator.....(541) 917-4506
Career Counselor
Or anyone on the Albany Campus list

Lebanon Police Department.....(541) 451-1751

Albany

Linn County Health Dept.....(541) 967-3866
Linn County Public Health.....(541) 967-3888
CARDV.....(541)754-0110
Toll Free 1-800-927-0197

Corvallis

Benton County Health.....(541) 766-6835
Valley AIDS Information Net....(541) 752-6322
Toll Free, 1-800-588-AIDS
CARDV*(541) 754-0110
Toll Free, 1-800-927-0197

Lebanon

Linn County Health Dept.....(541) 967-3866
Linn County Public Health.....(541) 967-3888
CARDV*(541) 754-0110
Toll Free, 1-800-927-0197

** Center Against Rape and Domestic Violence*

All Campuses:

Crimes can be reported to any Campus Security Authority (CSA)

Persons to report to by title:

Manager, Student Conduct and Retention
Director of Human Resources
Director of Safety & Loss Prevention
Coordinator of Student Life
Vice Presidents and Managers
Public Safety Officers/Staff
Coaches
Club Advisors
Counselors

Lebanon Center Campus	On Campus						Non- Campus						Public Property (Contiguous Areas)					
	2024	Hate Crime	2023	Hate Crime	2022	Hate Crime	2023	Hate Crime	2022	Hate Crime	2021	Hate Crime	2023	Hate Crime	2022	Hate Crime	2021	Hate Crime
Part I: Crime																		
Criminal Homicide																		
a.) Murder/non-negligent manslaughter	0	0	0	0	0	0	0	0	0	0	0	0	0	0	0	0	0	0
b.) Negligent manslaughter	0	0	0	0	0	0	0	0	0	0	0	0	0	0	0	0	0	0
Sex Offenses																		
a.) Rape	0	0	0	0	0	0	0	0	0	0	0	0	0	0	0	0	0	0
b.) Fondling	0	0	0	0	0	0	0	0	0	0	0	0	0	0	0	0	0	0
c.) Incest	0	0	0	0	0	0	0	0	0	0	0	0	0	0	0	0	0	0
d.) Statutory rape	0	0	0	0	0	0	0	0	0	0	0	0	0	0	0	0	0	0
Robbery		0	0	0	1	0	0	0	0	0	0	0	0	0	0	0	0	0
Aggravated Assault		0	0	0	1	0	0	0	0	0	0	0	0	0	0	0	0	0
Burglary	0	0	0	0	0	0	0	0	0	0	0	0	0	0	0	0	0	0
Motor Vehicle Theft	0	0	0	0	0	0	0	0	0	0	0	0	0	0	0	0	0	0
Arson	0	0	0	0	0	0	0	0	0	0	0	0	0	0	0	0	0	0
Total Part I Crimes	0	0	2	0	0	0	0	0	0	0	0	0	0	0	0	0	0	0
Drug, Alcohol, & Weapons Arrests & Referrals																		
Arrests		na		na		na		na		na		na		na		na		na
a.) Liquor law violations	0																	
b.) Drug law violations	0		1		0		0		0		0		0		0		0	
c.) Illegal weapons possessions	0		0		0		0		0		0		0		0		0	
Disciplinary Referrals		na		na		na		na		na		na		na		na		na
a.) Liquor law violations	0		0		0		0		0		0		0		0		0	
b.) Drug law violations	0		0		0		0		0		0		0		0		0	
c.) Illegal weapons possessions	0		0		0		0		0		0		0		0		0	
Total Drug, Alcohol, & Weapons Arrests & Referrals	0		1		0		0		0		0		0		0		0	
VAWA Incidents																		
Violence Against Women Violations		na		na		na		na		na		na		na		na		na

Lebanon Center Campus	On Campus						Non- Campus						Public Property (Contiguous Areas)					
	2024	Hate Crime	2023	Hate Crime	2022	Hate Crime	2023	Hate Crime	2022	Hate Crime	2021	Hate Crime	2023	Hate Crime	2022	Hate Crime	2021	Hate Crime
a.) Domestic Violence	0		0		0		0		0		0		0		0		0	
b.) Dating Violence	0		0		0		0		0		0		0		0		0	
c.) Stalking	0		0		0		0		0		0		0		0		0	
Total VAWA	0		0		0		0		0		0		0		0		0	
Part II: Incidents																		
*Simple Assault	0	0	0	0	1	0	0	0	0	0	0	0	0	0	0	0	0	0
*Menacing/Intimidation	0	0	2	0	0	0	0	0	0	0	0	0	0	0	0	0	0	0
*Theft/Larceny	0	0	1	0	2	0	0	0	0	0	0	0	0	0	0	0	0	0
*Property Destruction, Damage, or Vandalism	2		6	0	0	2	0	0	0	0	0	0	0	0	0	0	0	0
Criminal Mischief	0	0	0	0	0	na	0	na	0	na	0	na	0	na	0	na	0	na
Criminal Trespass	12	0	1	0	0	na	0	na	0	na	0	na	0	na	0	na	0	na
Disruptive Behavior	1	0	2	0	3	na	0	na	0	na	0	na	0	na	0	na	0	na
Miscellaneous	0	0	0	0	0	na	0	na	0	na	0	na	0	na	0	na	0	na
Total Part II *If hate crime, must be noted	0		12	0	8	2	0	0	0	0	0	0	0	0	0	0	0	0
Total Unfounded Crimes	0	-	0	-	0	-	0	-	0	0	-	-	0		0	-	0	-

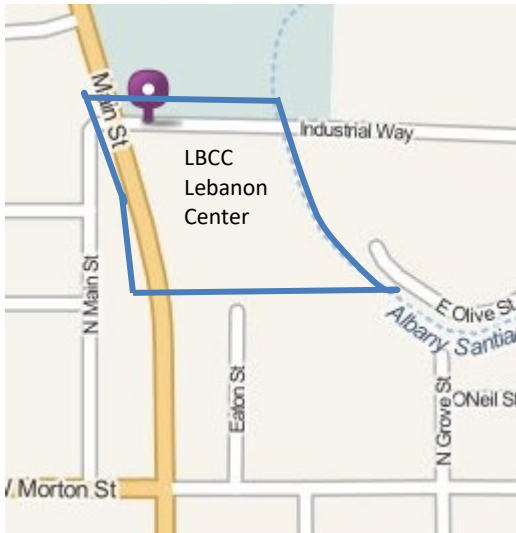
Other Activity

	2024	2023	2022
Door Locking	388	84	128
Campus Door Unlocks	720	643	328
Doors Unlocked/Ajar	422	560	297
Lost/Found Property	14	0	0
Medical Assistance	2	1	0
Motorist Assists	0	2	1
Personal Escort	6	2	1
Intrusion Alarm Response	10	3	100
Service Calls	43	9	0

Misc. Informational Reports	0	0	0
Total Other	1,605	1,304	855

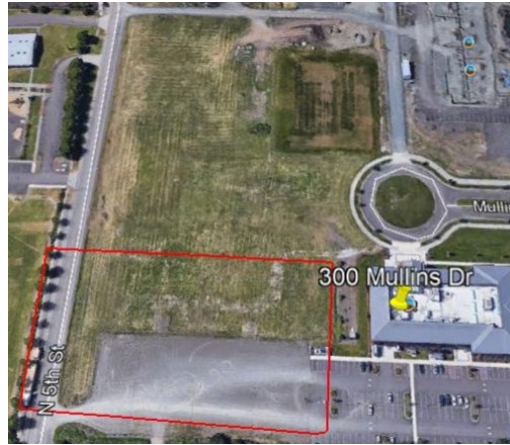
Caveat: (1) LBCC Public Safety Office just began patrol of the Lebanon Center in September. Lebanon Center campus or associated non-campus locations began tracking the "Other Activity" category in September of 2017.

Caveat: The Sweet Home Police Department did not provide statistics with the street address of our Sweet Home non-campus location for the reporting years 2017, 2016. Per West at (Clery) the statistics for Sweet Home as a non-campus facility are to be recorded only when or if the incident(s) occur in the facility or in an area that leads specifically to the access(s) of the facility.



Lebanon Center
44 Industrial Way, Lebanon

Health Occupations
Center 300 Mullins Dr.,
Lebanon



Non-Campus Locations

Facility	Street Address	City	State
Albany Boys' & Girls' Club	1215 Hill St	Albany	OR
Albany Library	2450 14th Avenue	Albany	OR
Albany Senior Center	489 Water Avenue NW	Albany	OR
Benton Hall (OSU)	Oregon State University	Corvallis	OR
Calapooia Brewery	140 NE Hill St.	Albany	OR
Cascade Elementary	2163 Seventh Street	Lebanon	OR
Central Elementary School	336 9th Ave SW	Albany	OR
Central Linn Admin Building	331 E Blakely Avenue	Brownsville	OR
Central Linn Elementary School	239 W 2nd	Halsey	OR
Clemen's Primary School	535 South 19th	Philomath	OR
Cool Swanson Action Center	705 Railroad Ave	Albany	OR
Corvallis Chamber of Commerce		Corvallis	OR
Corvallis High School	1400 NW Buchanan	Corvallis	OR
Corvallis Public Library	645 NW Monroe	Corvallis	OR
Corvallis Senior Center	2601 NW Tyler St.	Corvallis	OR
First Alternative Co-op	1007 SE Third Street	Corvallis	OR
First Congregational Church	4515 SW West Hills Rd	Corvallis	OR
Garfield Elementary School	1205 NW Garfield	Corvallis	OR
Harrisburg FRC	345 SMITH ST	Harrisburg	
Lakeshore Lanes	5432 Pacific Blvd SW	Albany	OR
Lakeside Center	Mennonite Village	Albany	OR
LBCC Horse Center	2958 53rd St	Albany	OR
Lebanon Senior Center	80 Tangent Street	Lebanon	OR
Linn County DHS	118 SE Second Ave, Suite D	Albany	OR
Mazama Brewing	33930 SE Eastgate Circle	Corvallis	OR
McAlexander Field House	OSU Campus	Corvallis	OR
Meadow Park	277 NW Conifer	Corvallis	OR
Memorial Middle School		Albany	OR
Mennonite Village	5353 Columbus SE	Albany	OR
Monroe High School		Monroe	OR
Old Mill School	1650 SW 45th St.	Corvallis	OR
Oregon City High School	W Beaver Creek Rd	Oregon City	OR
Oregon Connections Academy	38761 North Main Street	Scio	OR
OSU Austin Hall	2751 SW Jefferson Avenue	Corvallis	OR
Peace Lutheran Church	2540 Applegate	Philomath	OR
Philomath Community Library	1050 Applegate ST	Philomath	OR
Philomath High School	2054 Applegate	Philomath	OR
Reser Stadium (OSU)	Oregon State University	Corvallis	OR
Santiam Christian School	7220 NE Arnold Ave	Adair Village	OR
Scio Preschool	38743 Ash	Scio	OR
Sheldon High School	2455 Willakenzie Rd.	Eugene	OR
South Albany High School	3705 Columbus SE	Albany	OR
Strand Agriculture	OSU	Corvallis	OR

Facility	Street Address	City	State
Sweet Home Boys & Girls Club	890 18TH Ave.	Sweet Home	OR
Sweet Home High School	1641 Long St	Sweet Home	OR
Sweet Home Police Department	9th Ave	Sweet Home	OR
Timber Ridge School	373 Timber Ridge Street NE	Albany	OR
West Albany High School	1130 Queen Ave SW	Albany	OR
Willamette Neighborhood Housing	257 SW Madison	Corvallis	OR
Work Source Oregon	139 SE 4th Avenue	Albany	OR
ZCJB Hall	38704 S Main St	Scio	OR

Request for Special Needs or Accommodations

Direct questions about or requests for special needs or accommodations to the LBCC Disability Coordinator, RCH-105, 6500 Pacific Blvd. SW, Albany, Oregon 97321, Phone [541-917-4789](tel:541-917-4789) or via Oregon Telecommunications Relay TTD at [1-800-735-2900](tel:1-800-735-2900) or [1-800-735-1232](tel:1-800-735-1232). Make sign language interpreting or real-time transcribing requests 2-4 weeks in advance. Make all other requests at least 72 hours prior to the event. LBCC will make every effort to honor requests. LBCC is an equal opportunity educator and employer.

LBCC Comprehensive Statement of Nondiscrimination

LBCC prohibits unlawful discrimination based on race, color, religion, ethnicity, use of native language, national origin, sex, sexual orientation, gender, gender identity, marital status, disability, veteran status, age, or any other status protected under applicable federal, state, or local laws. For further information see Board Policy P1015 in our [Board Policies and Administrative Rules](#). Title II, IX, & Section 504: Scott Rolen, CC-108, 541-917-4425; Lynne Cox, T-107B, 541-917-4806, LBCC, Albany, Oregon. To report: <https://www.linnbenton.edu/about-lbcc/departments-and-contacts/report-an-issue/index.php>