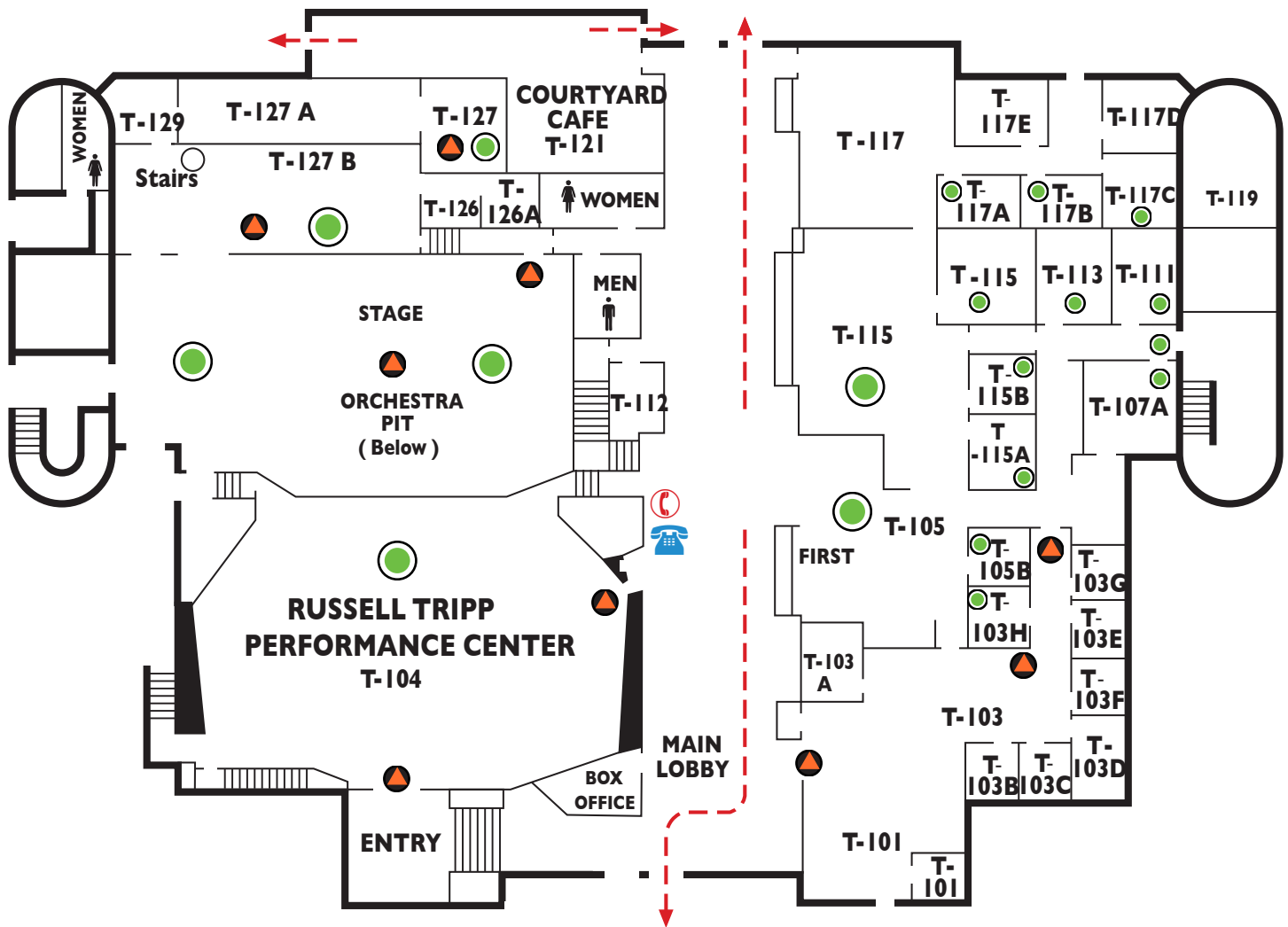






# TAKENA HALL First Floor



 = **SECURITY PHONE**  
Emergency/help -  
Connects to security  
officer on-duty

 = **SHELTER IN  
PLACE LOCATIONS**

 = **STORM SHELTER  
AREA**

 = **COURTESY PHONE**  
Allows access to local  
calls & campus extensions.  
All courtesy phones have  
instructions to call security




**EVACUATION ROUTE**


10/2015




# Takena Hall (T)

## Second Floor

SHELTER IN PLACE 

STORM SHELTER 

SECURITY PHONE:  
Emergency/help - connects to  
security officer on duty 

Emergency Exit 