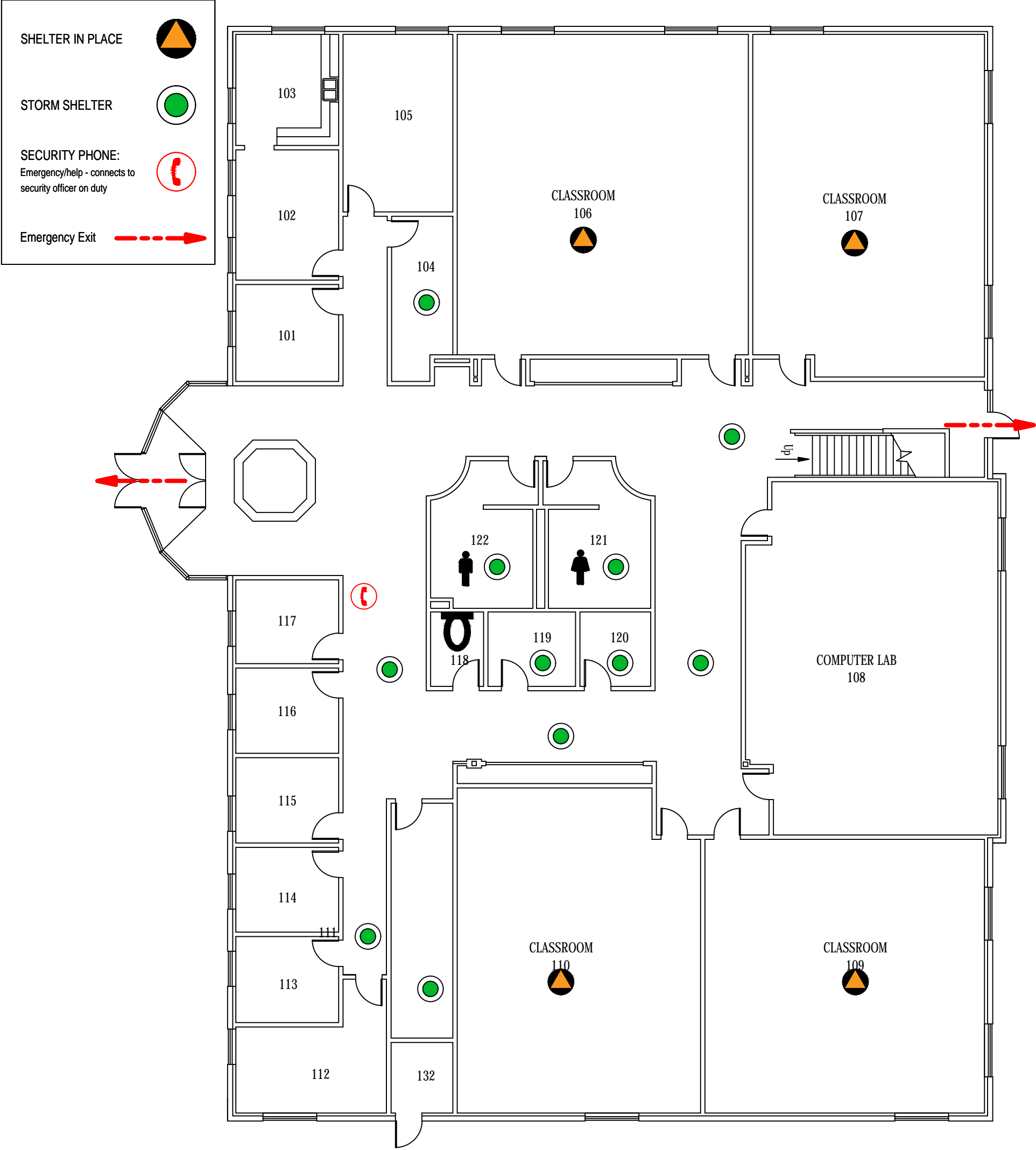


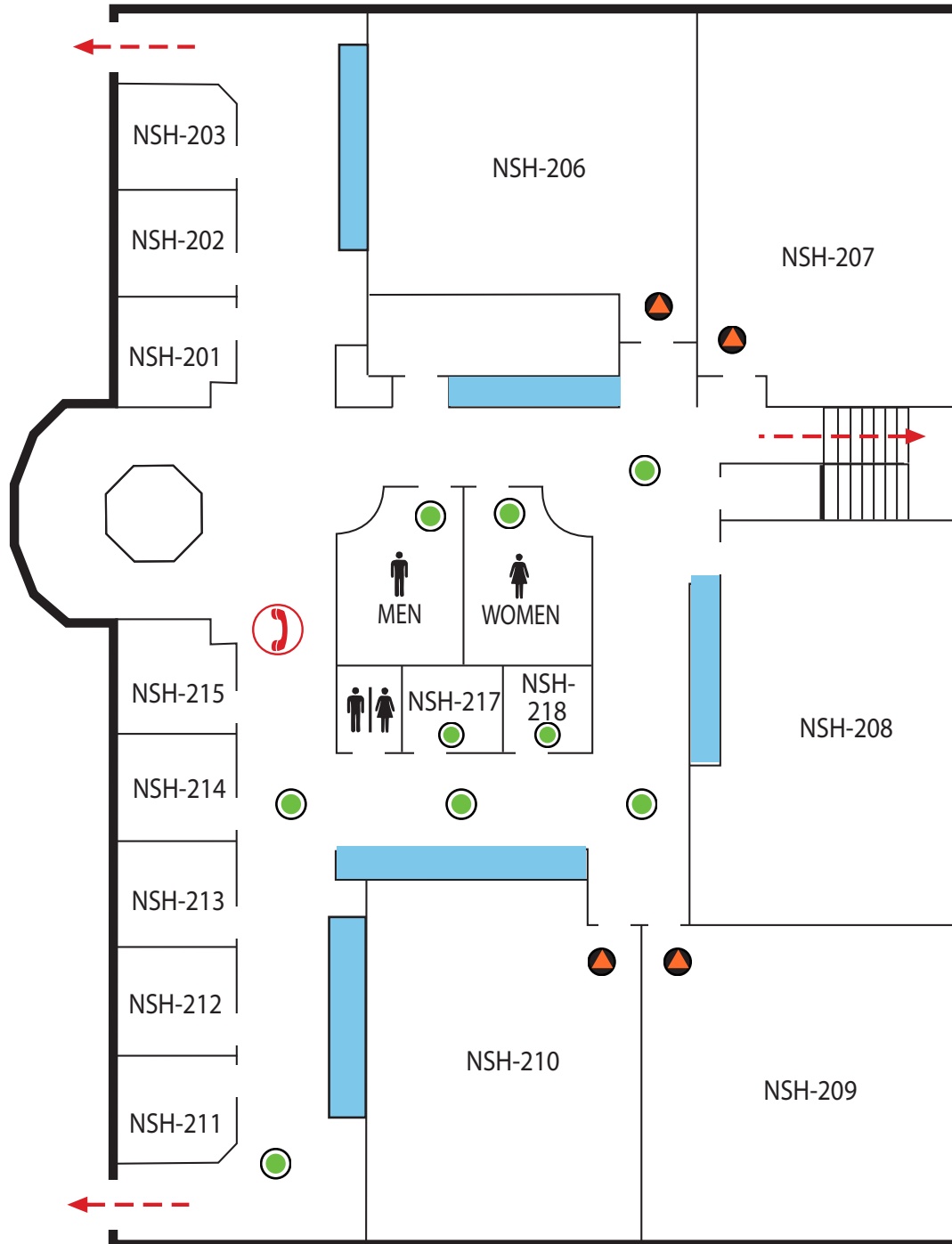



# North Santiam (NSH)


## First Floor





# NORTH SANTIAM HALL Second Floor



 = **SECURITY PHONE**  
Emergency/help -  
Connects to security  
officer on-duty

 = **SHELTER IN  
PLACE LOCATIONS**

 = **STORM SHELTER  
AREA**

 = **COURTESY PHONE**  
Allows access to local  
calls & campus extensions.  
All courtesy phones have  
instructions to call security

 **EVACUATION ROUTE**